



ANTRO
APARTMENTS



VITA GROUP
LONDON

Antro Apartments

Antro Apartments is a boutique development consisting of 9 contemporary apartments and penthouses, boasting high specification interiors and private terraces overlooking the green valleys of Purley.

For sheer convenience as a place to live, Purley takes some beating - which helps to explain why it has long been considered as one of London's richest and most desirable suburbs.

Each apartment offers versatile light open plan kitchen/living space and irrespective of which floor they occupy, benefit from their own private terrace/balcony in addition to the communal areas. They also boast a luxury en-suite to the master bedroom and come with their own private parking space.

Antro Apartments exemplifies all the delights of the suburbs with a variety of transport links

available - as well as being just a short drive away from the beautiful Surrey countryside.

Purley and Reedham Train Stations are less than a mile away and will get you to Central London in 22 minutes.

Conveniently, there are also a number of main bus routes within walking distance.





‘A Developer of Choice’

As an independent developer VITA Group has the freedom to create truly unique and bespoke developments. Where as many of our competitors have a house style or set approach to development, it is always Vita Group’s aim to create residences that are designed to best suit their location and the needs of their future residents.

Our developments are micro managed to ensure they run on time and on budget, whilst careful planning enables our craftsmen to produce intricate attention to detail, finished to perfection. We are firm believers that great planning leads to exceptional results and we take great pride in choosing everything right down to

the tiniest details. Our approach is bespoke, individual and niche, which has led to us achieving record breaking values for each of the projects we have completed. We apply a proven financial model to establish project viability and potential returns. This process is based on our experience of development costs, our knowledge of local markets and our vision on how best to transform a site to maximise value.

At VITA Group we understand that buying a new home is one of the most important decisions you will make during your lifetime.

From the moment you reserve your new VITA home, we pledge to

make the experience enjoyable and as stress free as possible

Throughout the entire process of building your new home, the Vita Group team will continually uphold its commitment to maintaining the highest standards.

Your home is protected by a 10 year ‘Checkmate’ or ‘CRL’ structural defect insurance, which covers any major defects to the structure of the property, or in its construction. Every component of your new home will be assessed to ensure that it meets with rigorous industry standards.





Backed by
HM Government



Lower Ground Floor



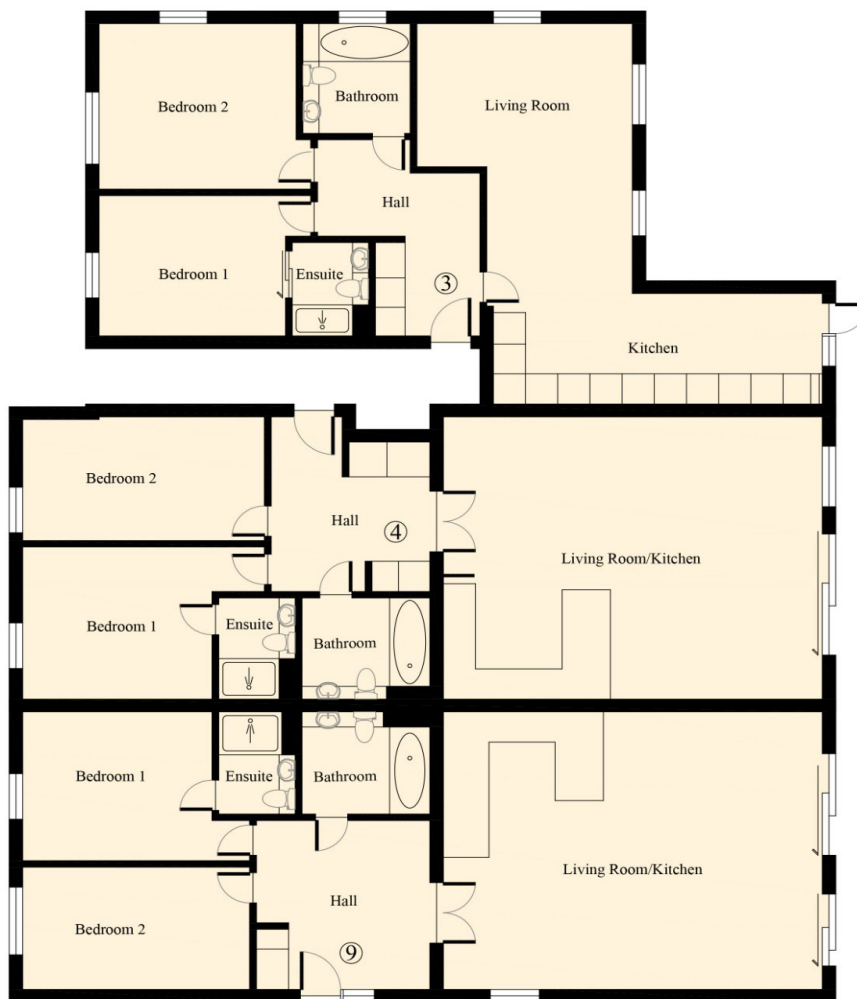
Flat 1

Bedrooms: 2
Bathrooms: 2
Square Ft: 689
Square M: 64

Flat 2

Bedrooms: 3
Bathrooms: 2
Square Ft: 1238
Square M: 115

Ground Floor



Flat 3

Bedrooms: 2
Bathrooms: 2
Square Ft: 807
Square M: 75

Flat 4

Bedrooms: 2
Bathrooms: 2
Square Ft: 893
Square M: 83

Flat 9

Bedrooms: 2
Bathrooms: 2
Square Ft: 915
Square M: 85

First Floor



Flat 5

Bedrooms: 2
Bathrooms: 2
Square Ft: 775
Square M: 72

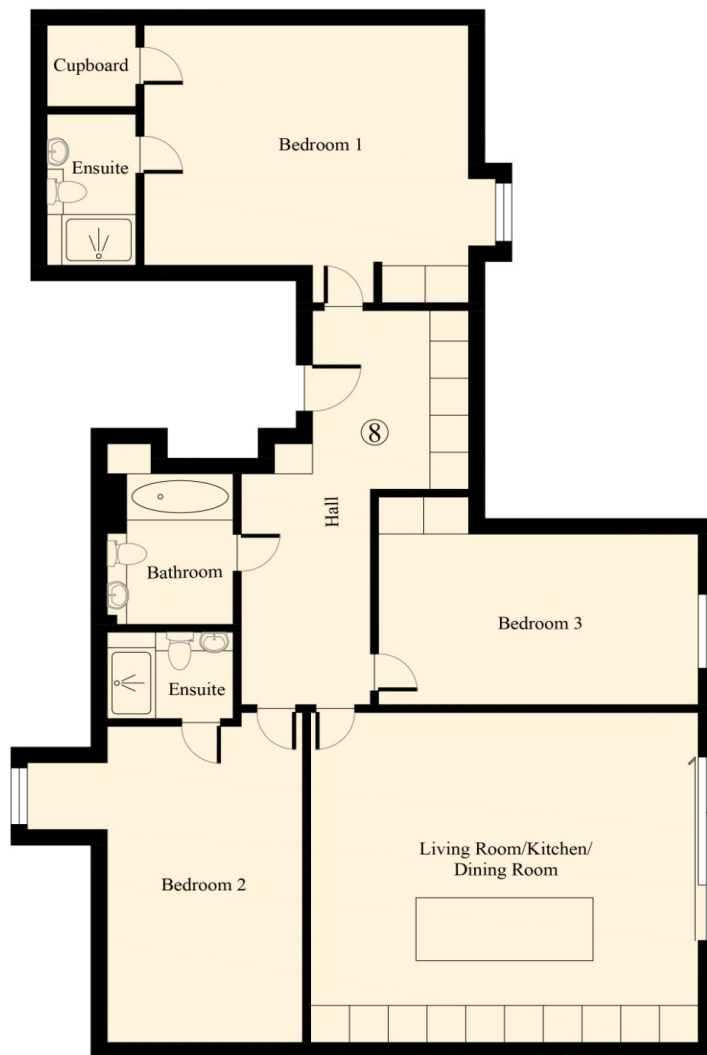
Flat 6

Bedrooms: 2
Bathrooms: 2
Square Ft: 840
Square M: 78

Flat 7

Bedrooms: 2
Bathrooms: 2
Square Ft: 775
Square M: 72

Second Floor



Flat 8

Bedrooms: 3
Bathrooms: 3
Square Ft: 1292
Square M:120

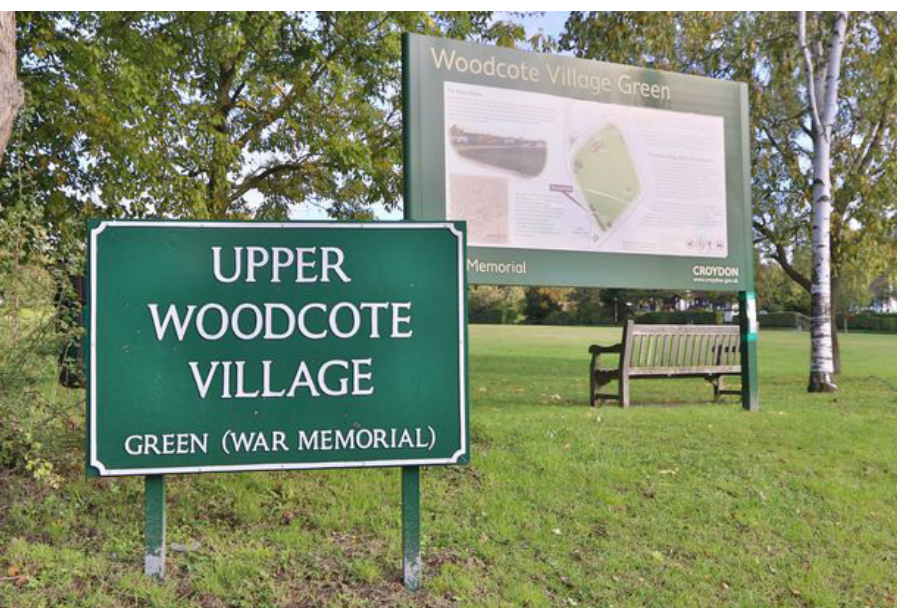
The Local Area

Antro Apartments are located in a sought after Town with many transport links into London. There is 2 train stations within 1 mile of the development and five bus routes including a night bus that takes you in to central London.

As well as excellent public transport, the development is located just 10 minutes away from the M25 making it easy to travel to most parts of the UK.

Ben's Court is located in the London borough of Croydon, which is home to the CR8 postcode, the most expensive per square footage outside of central London. Also home to the Webb Estate, Londons best kept secret. This is a residential conservation area, about 12 miles south of London. Originally farmland, this exclusive area has retained its atmosphere of tranquility for over 100 years. William Webb's unique approach to development, which gives the estate its character,

was based on the concept of co-ordination between architect and gardener. Webb laid out a garden landscape and then introduced 225 properties, all different and carefully sited. The estate was to be the work of a lifetime and took Webb 30 years to perfect his vision, which now encompasses eleven roads.





VITA GROUP
LONDON

